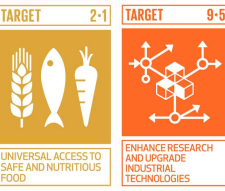


# MIX WELL

## CONTRIBUTION TO SUSTAINABLE DEVELOPMENT



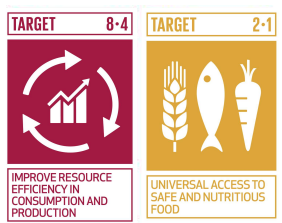
**S4: Healthy products for everyone**  
 We develop healthy product alternatives that make consumers 'everyday lives easier and at the same time contribute to strengthening our customers' health. We do this with products for consumers but also in collaboration with bakeries, industries and other actors who works to strengthen consumers' health



**M1: A cleaner world**  
 Through efficient transport, smart packaging solutions, optimization of waste from packaging and production.



**A4: healthy employees**  
 Through participation and cooperation, we want to find good, efficient and smart ways of working that are good for the long-term health of those who work at the company.



**M2: Efficient use of resources**  
 With our products and production, we want to work to reuse and use our resources as efficiently as possible and reduce waste.

**E4: Sustainable future**  
 By collaborating with suppliers and customers, we want to create conditions for our products and our production to be as efficient as possible and not use more resources than necessary.



**S6: Better health for everyone**  
 With our products, we want to make everyday life easier for people who have allergenic challenges. This way we contribute to increased health in society. We develop the products that makes life easier for more people.



**A5: Focus on the employee**  
 Through participation and collaboration, we want to create conditions for each individual to find interesting tasks and areas in which they can develop.

